

FEBRUARY 2014

HELLO WORLD



Christine Riccio has a 20-acre organic farm near Nevada City, California. She loves animals, growing food and preparing farm-to-table meals. She's famous for her hot pepper jellies (sold at the SRI Christmas Fair in Menlo Park). She also has chickens, a horse and two burros! Above are Rudy and Lars, two wild burros adopted from the federal government's Adopt a Burro program.

Both were adopted when they were about six months old to provide companionship to her horse, Uncle Gandolf. They get in the same trouble that all kids do. This twosome managed to break into her pumpkin patch, eat most of last year's crop, and also enjoyed a "walk-about," where they ended up on the local police blotter. She has since forgiven the guys since they are just "so cute."

Eating the pumpkin patch caused a major problem with the farm's annual pumpkin event. Neighbors are invited to pick a pumpkin, carve it, and then they have a contest. Christine cooks up a dinner with everything pumpkin: pumpkin enchiladas, pumpkin stew, pumpkin soup, pumpkin lasagna, and pumpkin cheesecake, cookies and pie! The event was saved because the farm also produces peppers, summer squashes, tomatoes, herbs, carrots, eggplant, broccoli, cucumbers, green beans, eggs and has over 100 fruit trees (peach, apricot, nectarine, plum, pluot, apple, fig, pear and cherry).

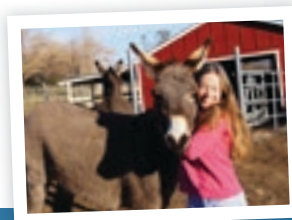
Christine has worked at SRI International for 31 years. Her degree in mathematics has allowed her to work in a number of roles with SRI. As the IT Manager of Vendor Management, she reviews and renegotiates contracts, consolidates vendors and gets great satisfaction out of saving money and maximizing value from software, hardware and maintenance. Just like working at SRI, she gets great satisfaction out of the farm because she likes seeing RESULTS! She also serves on the credit union's Supervisory Committee.

Christine is one of our members who fully utilizes the credit union's products and services: savings accounts, eDeposits and loans. Her Bitney Springs Farm was a dream that the credit union helped create.

If you also like results, call our friendly staff and let us help make your dream come true!

Connect with us today!

Steve Bowles
CEO/CFO



26

CU MEET 2014

Plan to attend the
2014 Annual Meeting
Wednesday, March 19 - 12 Noon
International Building
SRI International, Menlo Park, CA

DON'T BE A TARGET

The latest news on data and plastic card breaches are rippling into 2014. Media reports consumers have zero liability on fraudulent transactions. However, the credit union does not enjoy the same protection. Plastic card fraud losses are our costs 90% of the time. Add the expense to coordinate and reissue plastic cards. Factor in the hassle and inconvenience to you. Inertia is not an alternative. Your actions can make a difference:

- **Advise us of your travel plans**
- **Verify your contact information is current: cell phone, work and home numbers and email**
- **Establish text or email alerts to monitor transactions on your accounts**
- **Monitor your accounts for unusual transactions and let us know!**
- **Enroll in our Card Guardian service**

The credit union staff is ready to help you enable these protections. Call us at 800.986.3669, visit us in Menlo Park, email connect@srifcu.org, or visit www.srifcu.org.



Improve more than *your home!*

HOME EQUITY LOANS TO IMPROVE YOUR LIFE

No points, no fees, no closing costs, 3.25% APR variable rate (prime)

BALANCE TRANSFER SWAP & SAVE

Transfer your high rate credit card balances to our lower rate & no fee Visa® Cards
Apply today at www.SRIFCU.org

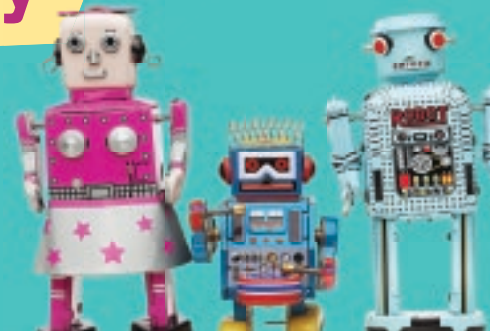
We'd Love to Meet Your Family

Share the products and personalized service

Free checking, ATM fee refunds, eDeposit,
plus Money Market, Certificates and IRAs

Visa® Credit Cards, Auto Loans,
HELOCs and Mortgages

Mobile and Online Access



CONNECT WITH US TODAY

SRI Federal Credit Union

333 Ravenswood Avenue
Menlo Park, CA 94025-3493
Toll-Free: 800.986.3669
Fax: 650.326.8916

Mail

P.O. Box 2284
Menlo Park, CA 94026-2284

Website: www.SRIFCU.org

Email: CONNECT@srifcu.org

Branch Hours

Monday through Friday
9 AM to 4 PM